



Certificate of Calibration

Transducer Model: PDI Transducer

Pile Dynamics, Inc.

Serial Number: E738

PDI Gage Factor: 94.8 meV

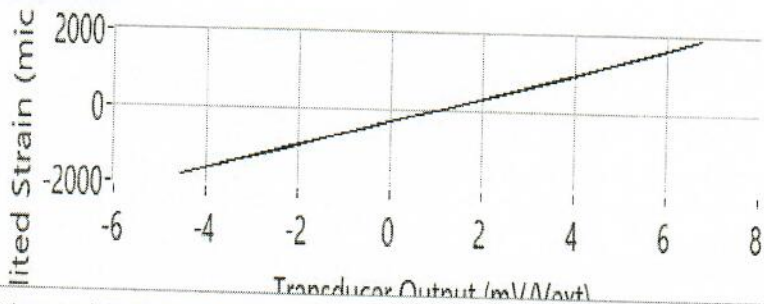
General Gage Factor: 329.1 me mV/V_{exc}

Initial Offset Voltage: 0.256 mV_{exc}

Table 1: Representative Calibration Data

Applied Strain (micro-strain)	Transducer Output (mV/V _{exc})	Applied Strain (micro-strain)	Transducer Output (mV/V _{exc})
-48.888	0.820	125.464	1.352
-107.888	0.446	432.088	2.287
-454.888	-0.439	740.098	3.215
-742.404	-1.320	1051.058	4.149
-1016.160	-2.157	1363.138	5.082
-1282.036	-2.907	1681.163	6.027
-1508.476	-3.646	1930.601	6.787
-1745.380	-4.382	1680.936	6.607
-1809.300	-4.549	1553.550	5.649
-1686.861	-4.228	1233.181	4.667
-1421.197	-3.419	919.319	3.740
-1152.300	-2.539	608.008	2.797
-890.370	-1.736	313.503	1.912
-626.159	-0.987	73.474	1.181
-378.272	-0.204	-49.218	0.615
-169.659	0.446	-48.694	0.616

Calibration Curve



Mean Linear Correlation Coefficient (LCC): 0.999969

Calibrated By: Paul Hartman

Date and Time: 10/12/2022 8:12 AM

LCC Standard Deviation: 7.573750E-7

Signature: Paul Hartman

Temperature (Degrees C): 26.0