



## SiteLink Technology

*Technology that enables engineers to conduct Dynamic Foundation Testing, Thermal Integrity Profiling, Shaft Verticality, and Bottom from any location.*

### Real Time Results.

SiteLink offers a high technology solution to shrinking budgets and fast track construction. It eliminates scheduling conflicts and the travel of testing engineers to the field to conduct the test, minimizing the time of report submittal. The engineer monitors the job remotely, using software that tracks and controls the pile test.

### When Dynamic Testing is done with SiteLink Technology:

A Pile Driving Analyzer® (PDA) with all necessary instrumentation is sent to the field; it's there when you need it. The construction crew is trained to set up the instrumentation and initiate SiteLink. A highly qualified PDA engineer performs the entire test from any location, in realtime, exactly as if present on the job.

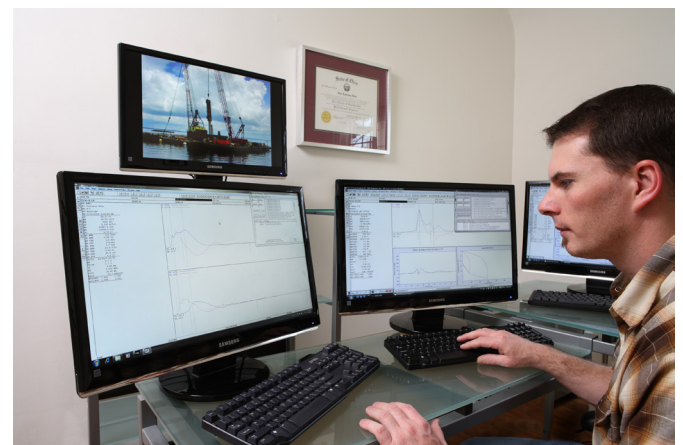
Thermal Integrity Profiling, Shaft Verticality and Bottom Cleanliness testing are done similarly, with a qualified engineer coordinating with onsite individuals and assessing the data in near real time. The SiteLink Technology helps keep projects moving, saving time and money.



## Remote Testing Technology

### The SiteLink Advantage:

- Faster testing
- Optimal scheduling
- Lower cost
- No travel cost for the engineer
- More tests per job
- More favorable factors of safety (LRFD\*)
- Quick assessment of variable soil conditions
- Faster decisions
- Uncompromised testing quality



[www.pile.com/resources/sitelink-technology/](http://www.pile.com/resources/sitelink-technology/)

**Pile Dynamics, Inc. (PDI)** is the world leader in developing, manufacturing and supplying state of the art QA/QC products and systems for the deep foundations industry. The company is headquartered in Cleveland, Ohio, USA, with offices and representatives worldwide. For additional information visit us at [www.pile.com](http://www.pile.com) or contact [info@pile.com](mailto:info@pile.com).